



Environmental Hazards Survey



Boyle Heights Continuation HS (c. 1922)	Principal		Alejandro Macias
544 S MATHEWS ST, LOS ANGELES, CA 90033	E-mail		axm3724@lausd.net
323-264-8070	Site ID		13523
	Yes	No	Notes
Rail line (active, easement, or spurs) within 128 ft?		X	
Cellular phone antenna adjacent or on site?		X	
50-200 kilovolt (kV) power line within 100 ft (above ground)/25 ft (below ground)?		X	
200-230 kV power line within 150 ft (above ground)/37.5 ft (below ground)?		X	
500-550 kV power line within 350 ft (above ground)/87.5 ft (below ground)?		X	
Major transportation corridor within 500 ft?		X	
Reservoirs, water, or fuel storage tank facilities within 500 ft?	X		Valero 450 ft. west of site
Haz mat transmission pipelines within 50 ft?	X		SoCalGas pipeline 50 ft. north of site
Oil production facilities (existing or former oil wells/borings and processing equipment) within 50 ft?		X	
Located within an Oil Field / Methane Zone / Methane Buffer Zone?	X		Methane Zone
Located within a High Risk Radon Zone?		X	
Superfund Site within 500 ft?		X	
Landfill facility within 500 ft?		X	
Mapped or active earthquake fault within 500 ft?		X	
CalEPA Regulated Sites of Concern* within 500 ft?	X		Rodriguez Auto Center 100 ft. north of site, Valero 430 west of site, Merida's auto repair 280 west of site
<p>* The CalEPA Regulated Site Portal (Portal) combines data about environmentally regulated sites and facilities in California into a single, searchable database and interactive map. To use the Portal to identify facilities near an LAUSD school:</p> <ul style="list-style-type: none"> - First zoom in to a school location on the map by either using the search bar to enter the school's address or by using a mouse and zoom tools - Once the user has zoomed in to a school site, the map shows all the regulated sites near the school - Users can click on the regulated sites to find out additional information about the sites - The Portal also includes tools to measure the distances between locations on the map 			
Here is a link to the CalEPA Regulated Site Portal:		https://siteportal.calepa.ca.gov/	


This survey was completed in 9/22.

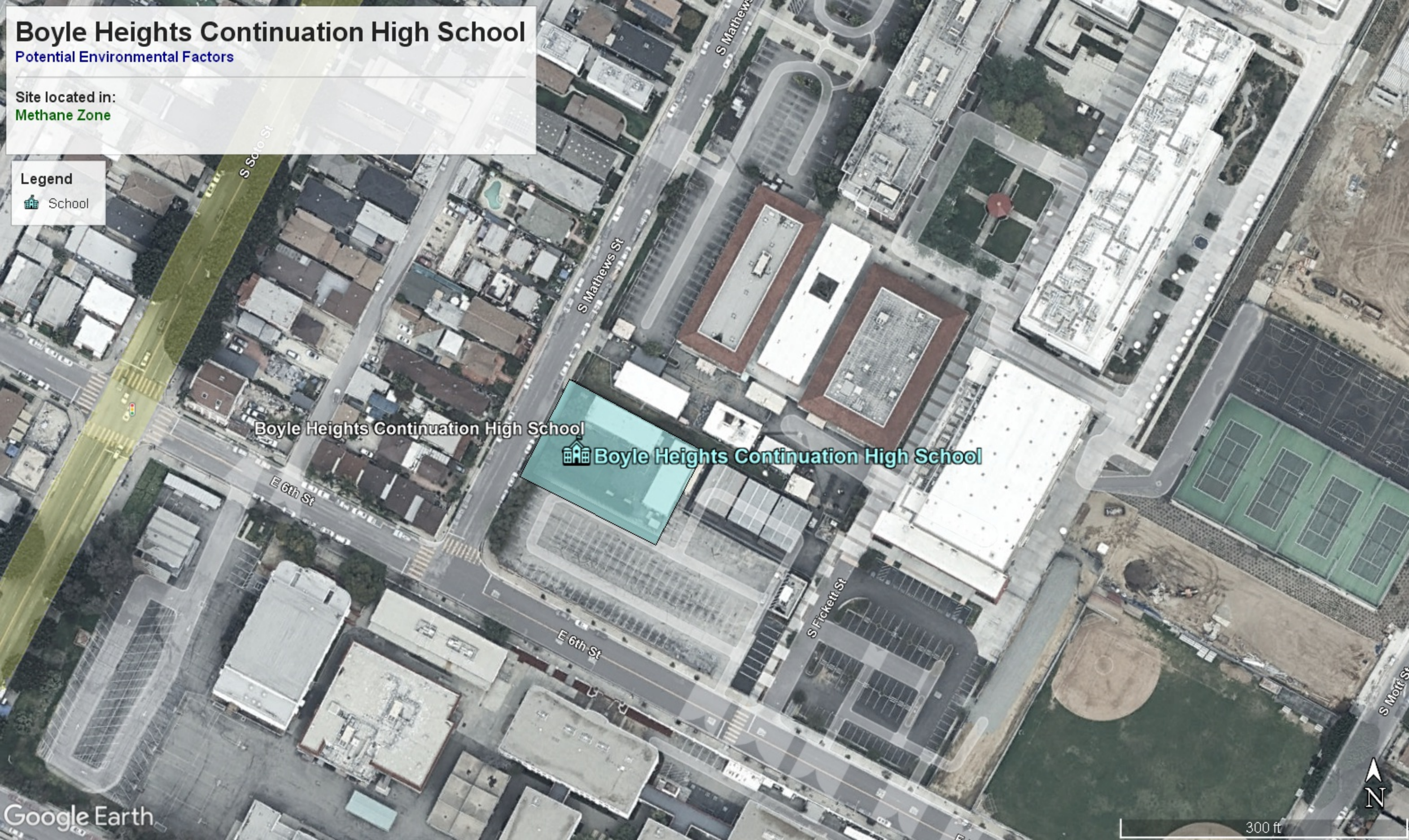
Boyle Heights Continuation High School

Potential Environmental Factors


Site located in:
Methane Zone

Legend

 School



Boyle Heights Continuation High School

 Boyle Heights Continuation High School